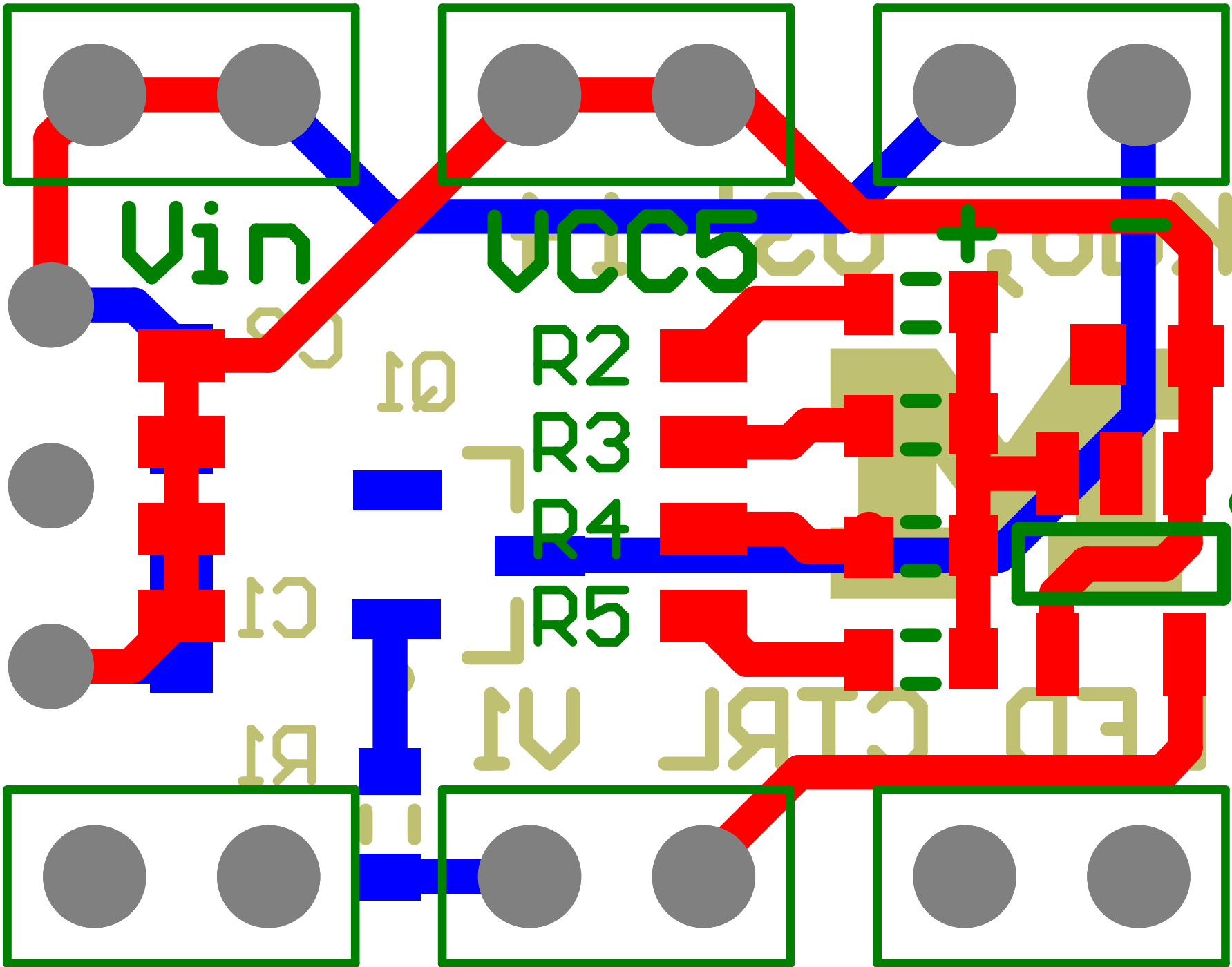
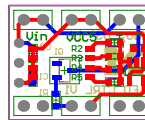
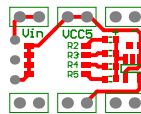
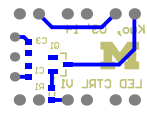


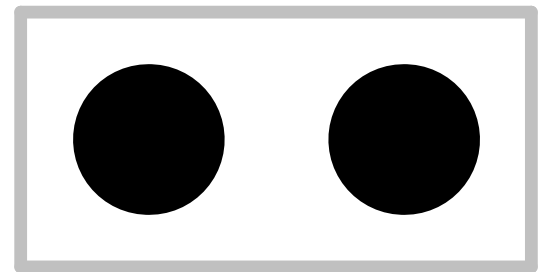
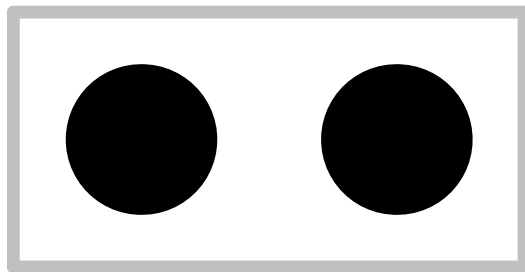
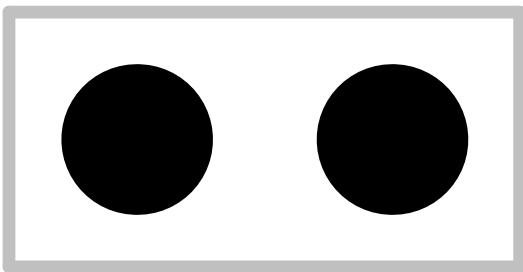
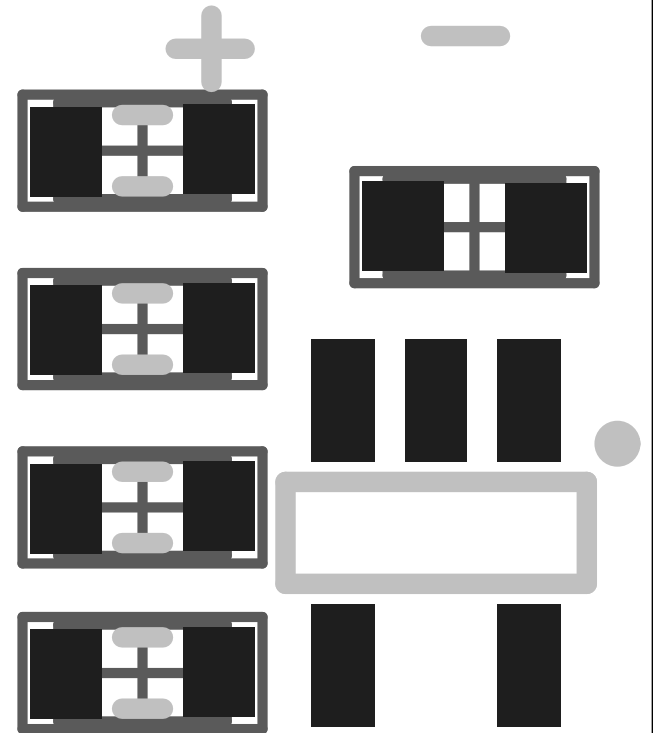
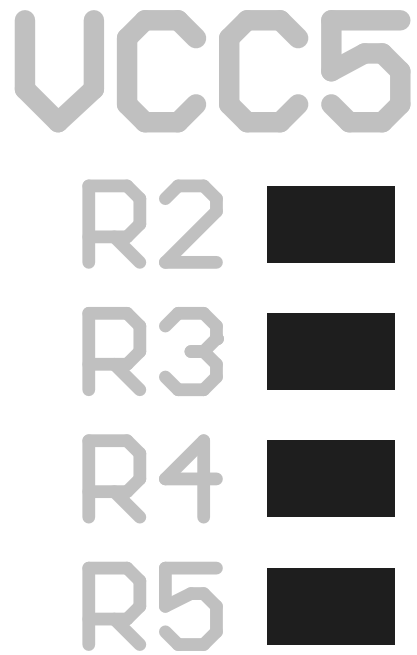
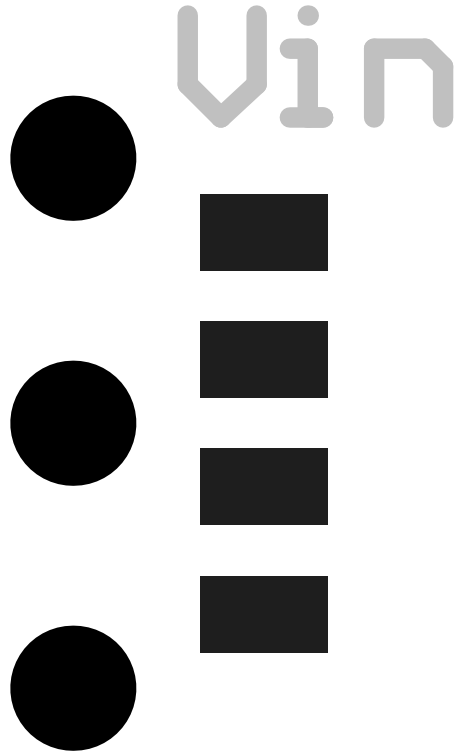
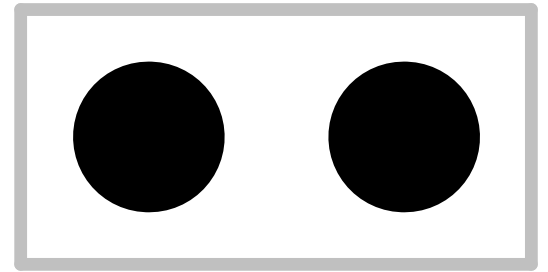
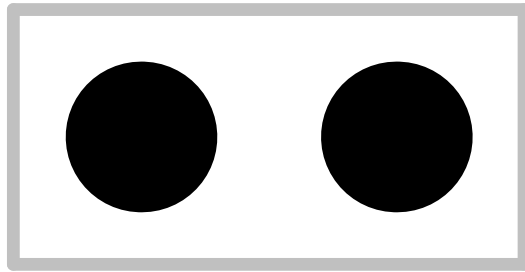
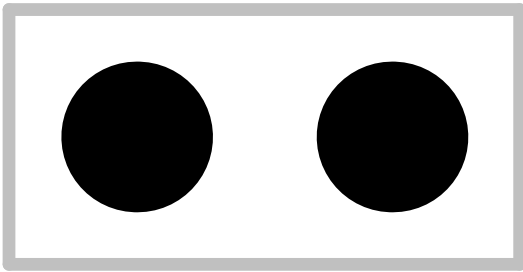
Title *		Cannot open file C:\Users\samk ASST-334 University of Michigan
Author: *	Revision:*	
Date: 6/25/2014	Sheet* of *	
File: vle_ctrl.SchDoc		







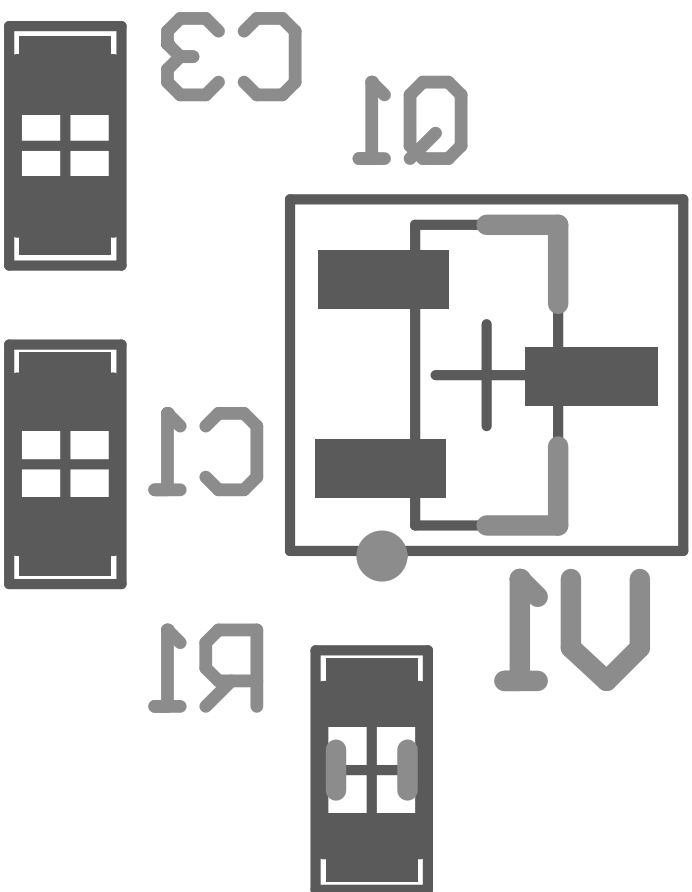


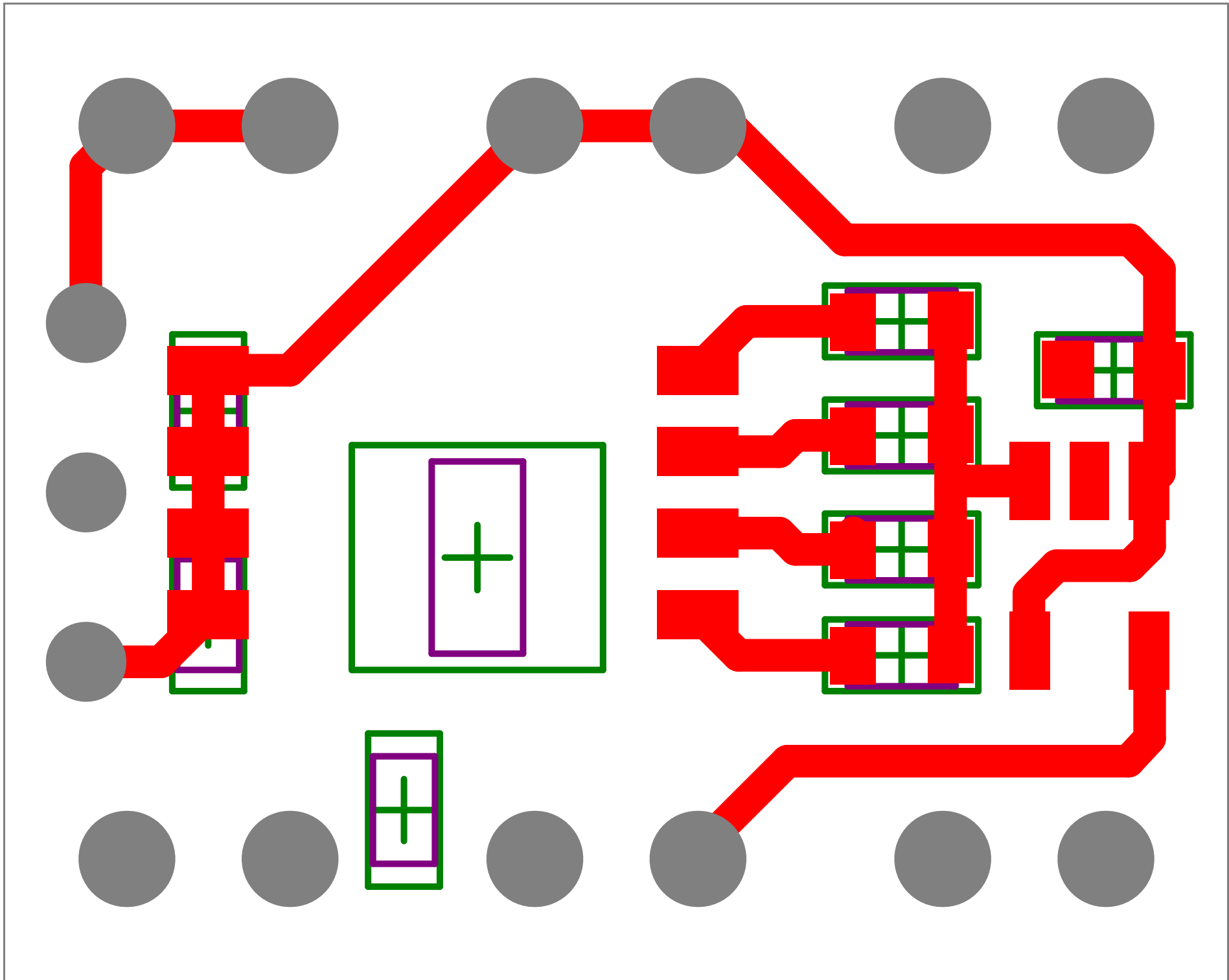


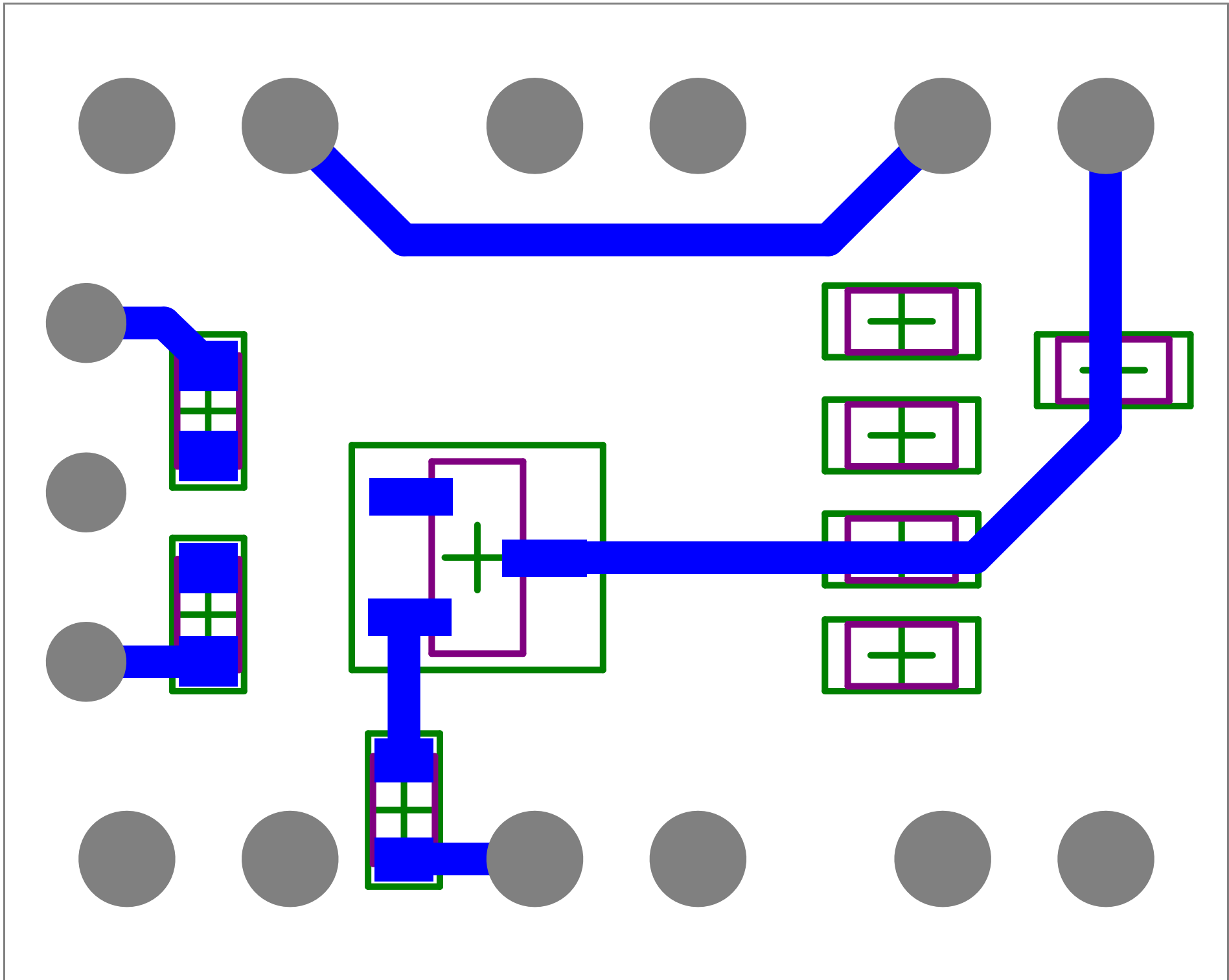
LED CTRL

M

Kno', 03, 14

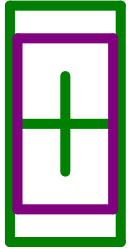
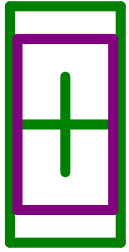








Vin



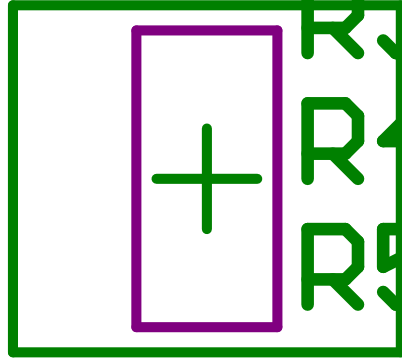
VCC5

R2

R3

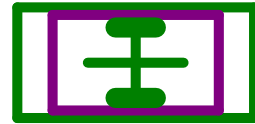
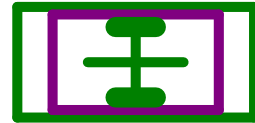
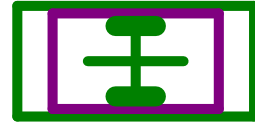
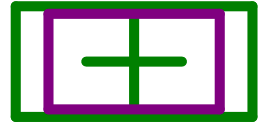
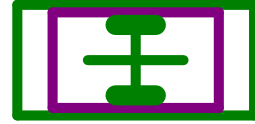
R4

R5

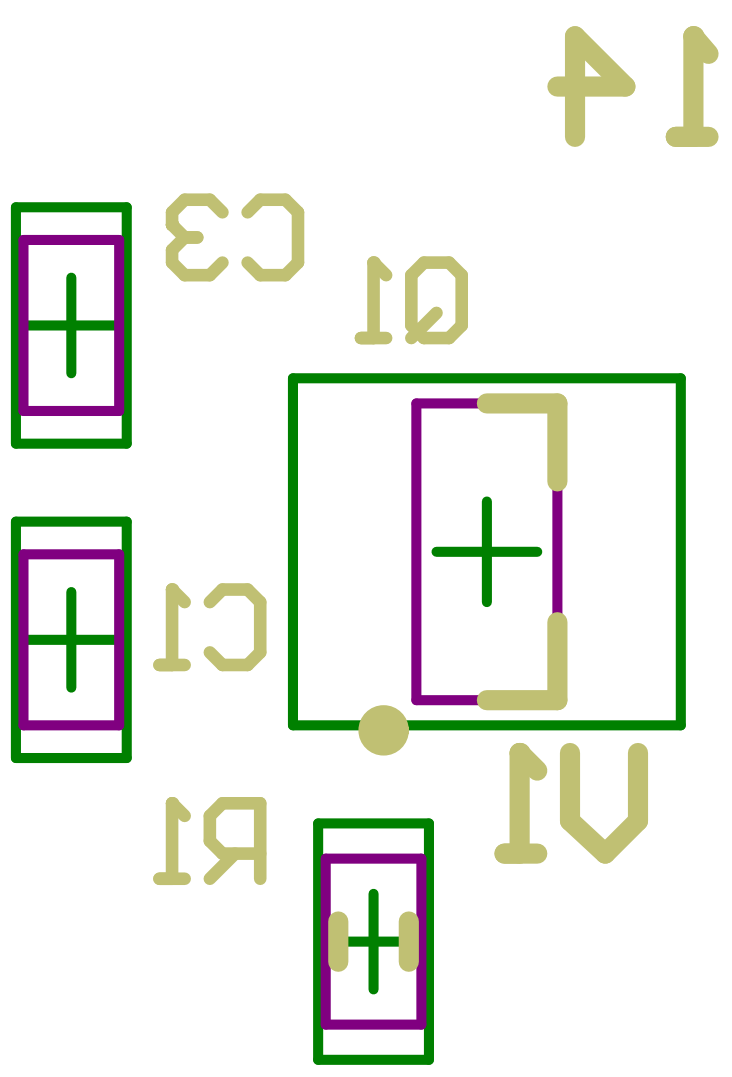


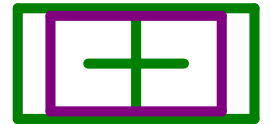
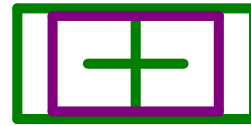
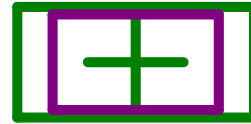
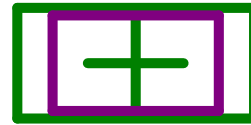
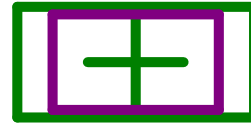
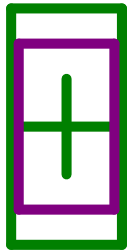
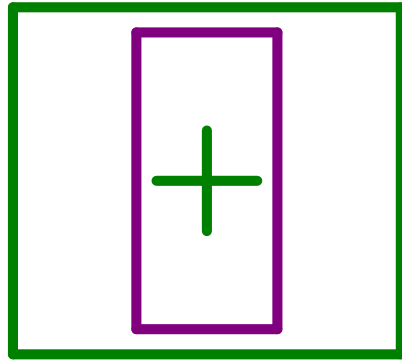
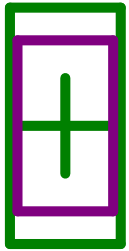
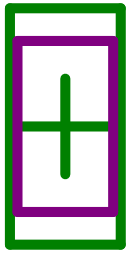
+

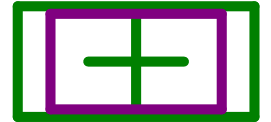
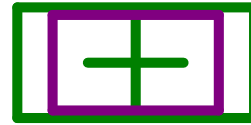
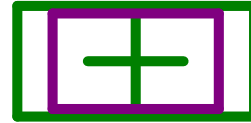
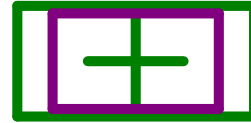
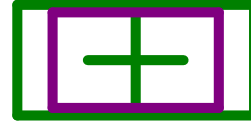
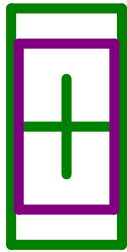
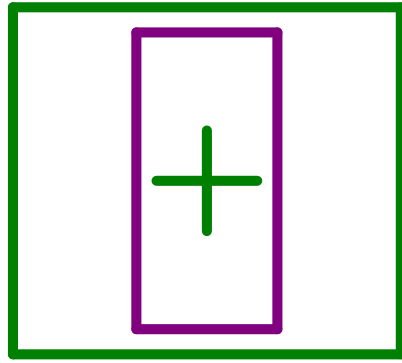
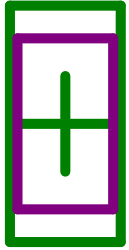
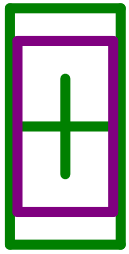
-

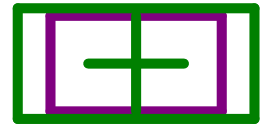
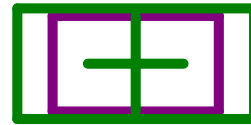
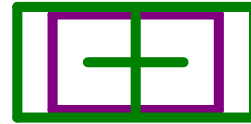
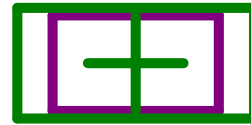
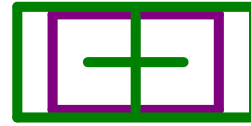
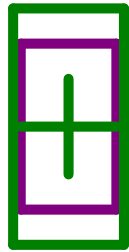
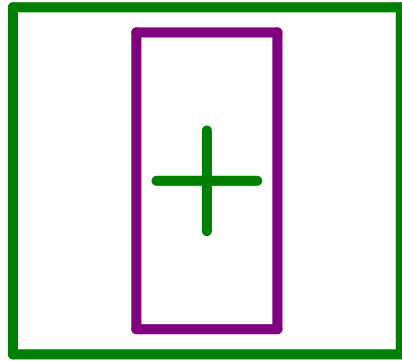
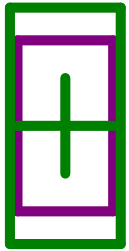
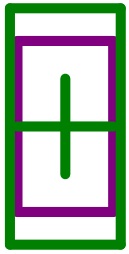


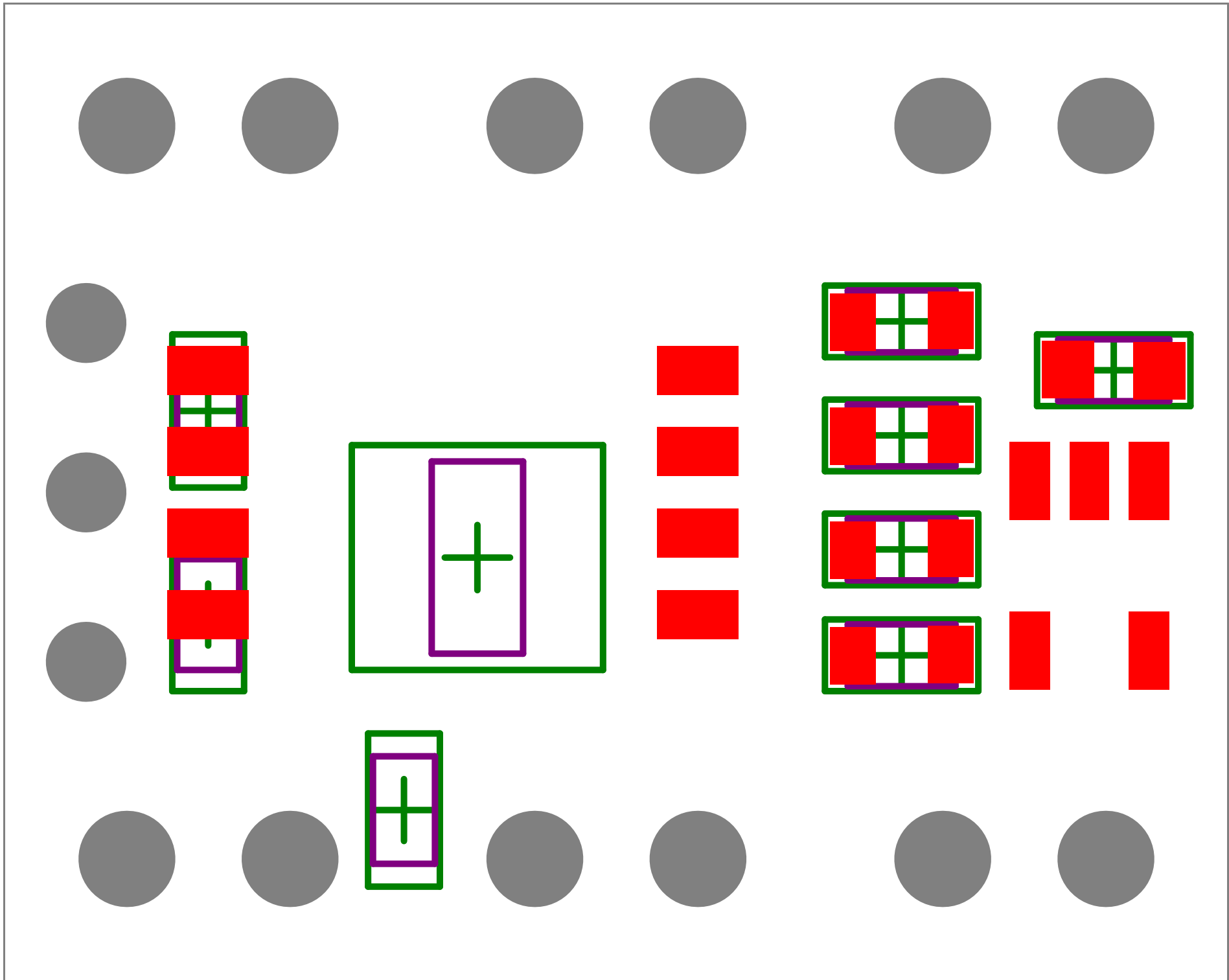
LED CTRL M Knob, 03, 14

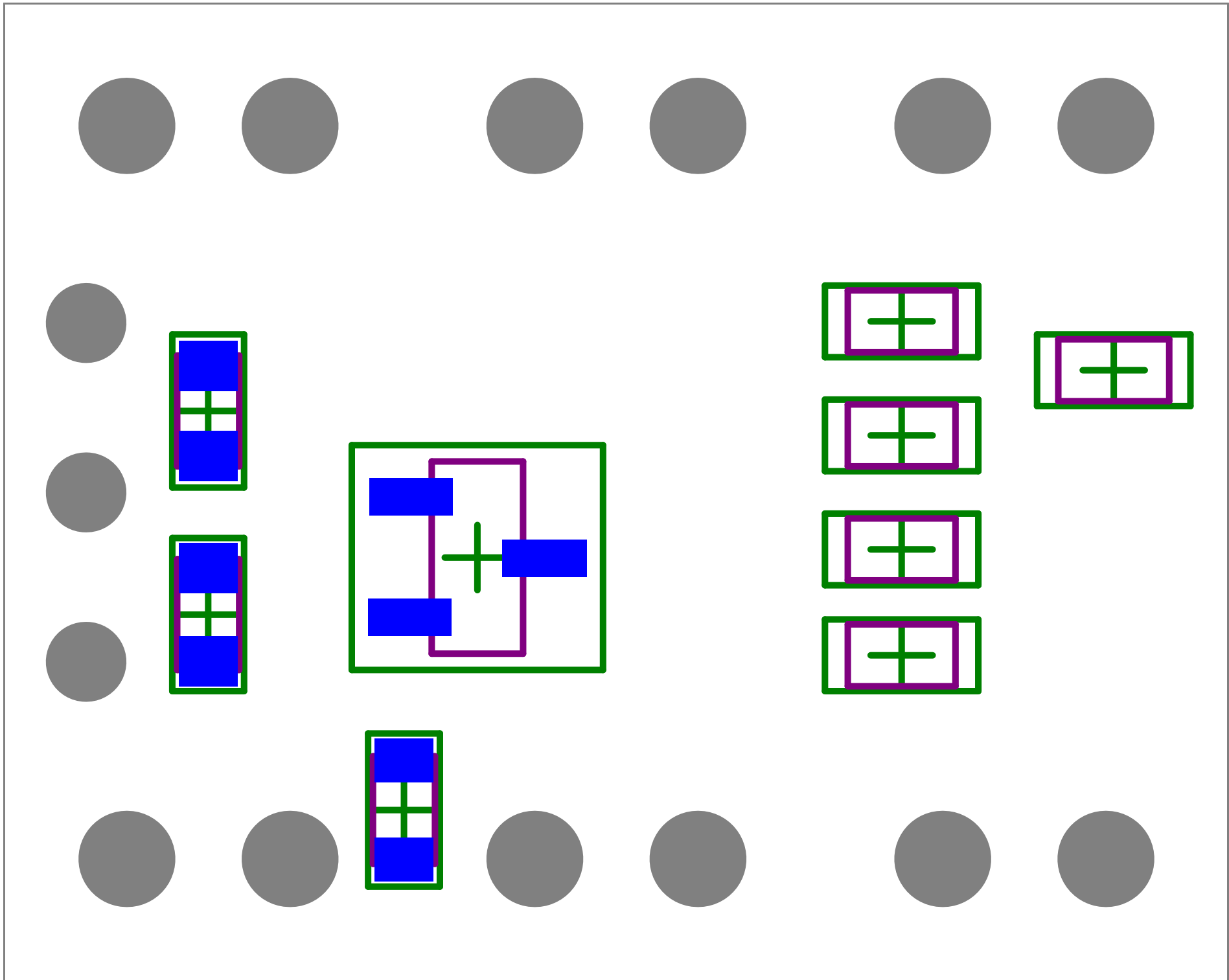


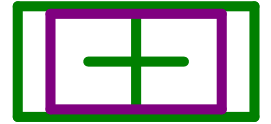
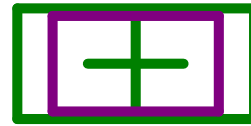
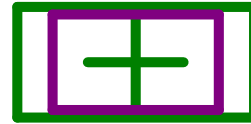
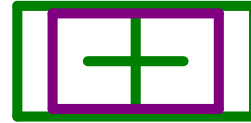
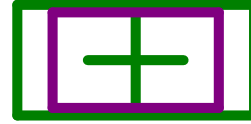
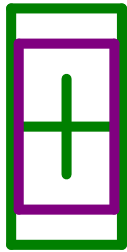
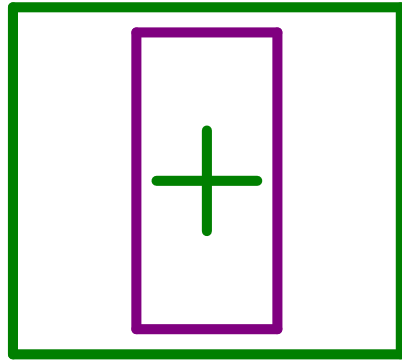
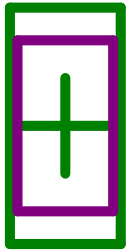
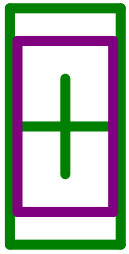


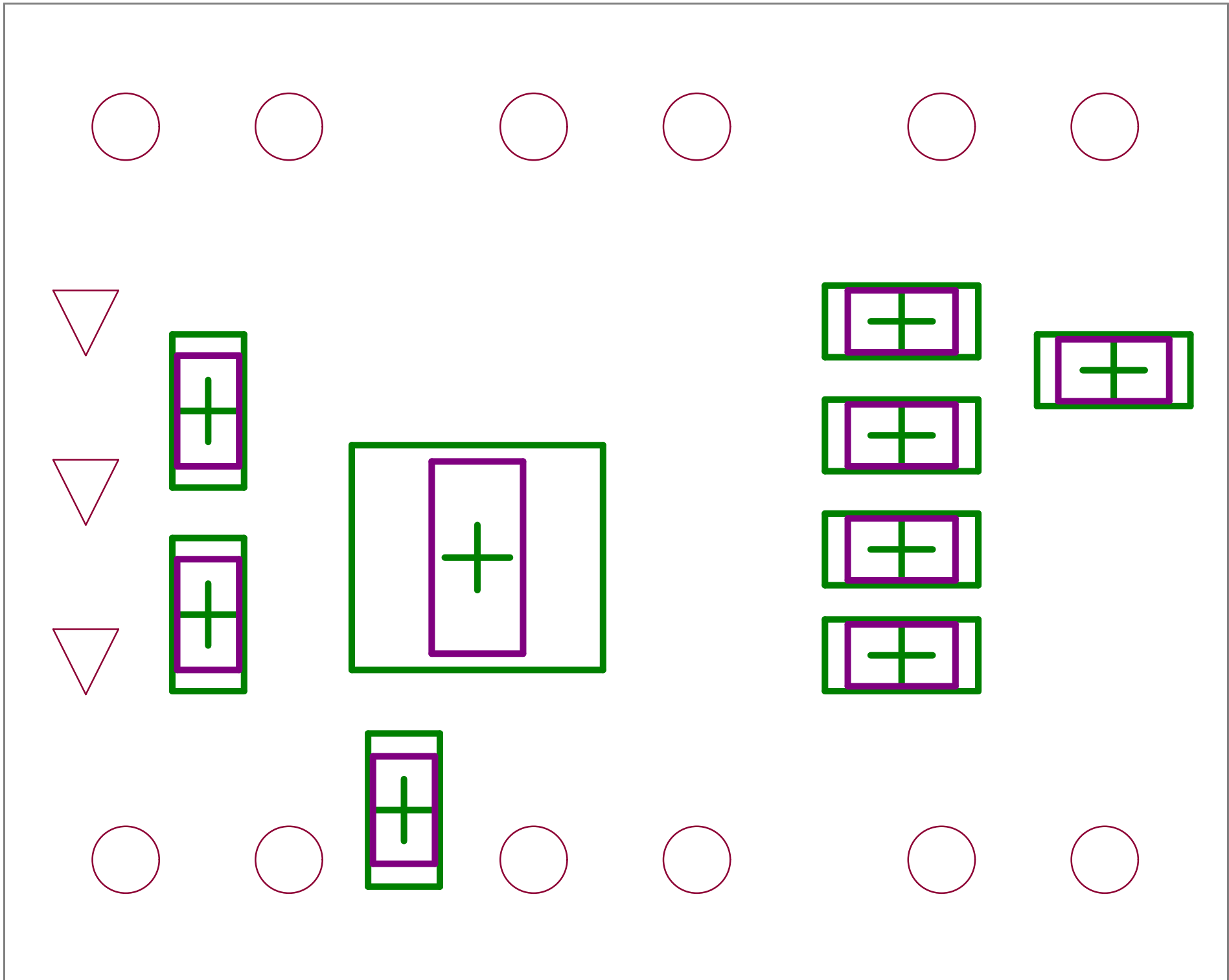












+

+

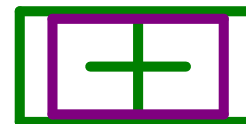
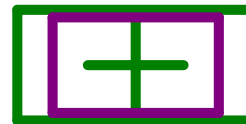
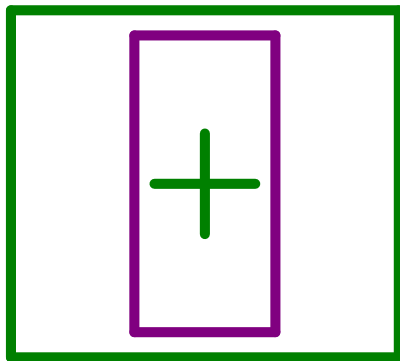
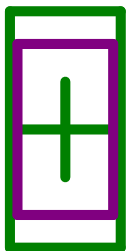
+

+

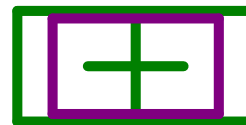
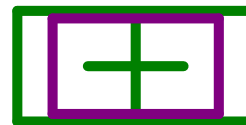
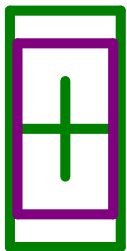
+

+

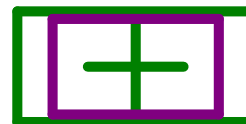
+



+



+



+

+



+

+

+

+

Comment	Description	Designator	Footprint	LibRef	Quantity
Cap Semi	Capacitor (Semiconductor SIM Model)	C1, C2, C3	1608[0603]	Cap Semi	3
1 x 2 header	100 mils standard header	P1, P2, P3, P4, P5, P6	1x2 header	1 x 2 header	6
Si2312CDS	N-Channel 20 V (D-S) MOSFET	Q1	SOT95P250-3N	Si2312CDS	1
Res3	Resistor	R1, R2, R3, R4, R5	J1-0603	Res3	5
CHS-04TB	SLIDE SWITCHES	SW1	CHS04TB	CHS-04TB	1
LTC6900	Low Power, 1kHz to 20MHz Resistor Set SOT-23 Oscillator	U1	TSOT23	LTC6900	1
LM78L05	LM78LXX Series 3-Termin	U2	TO92	LM78L05	1