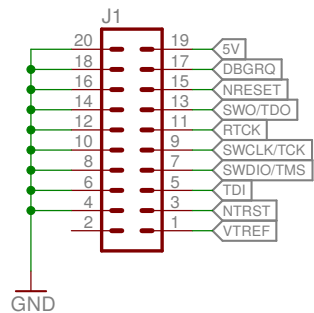
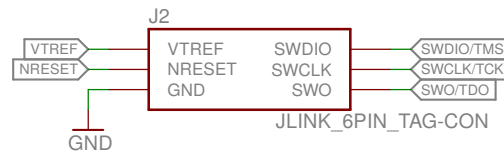




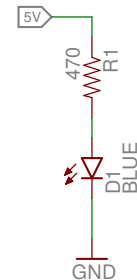
20-Pin Ribbon Cable from JLink



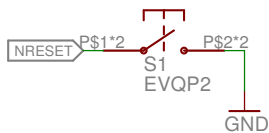
6 Pin Pogo Connector



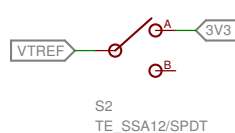
Power LED



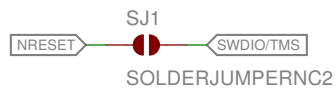
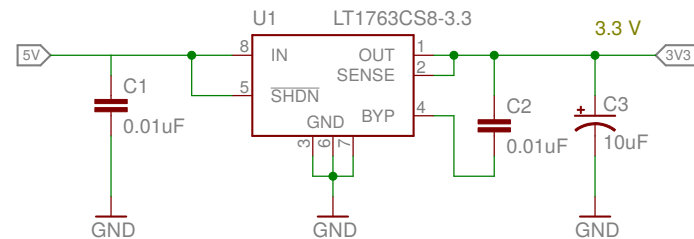
Manual Reset



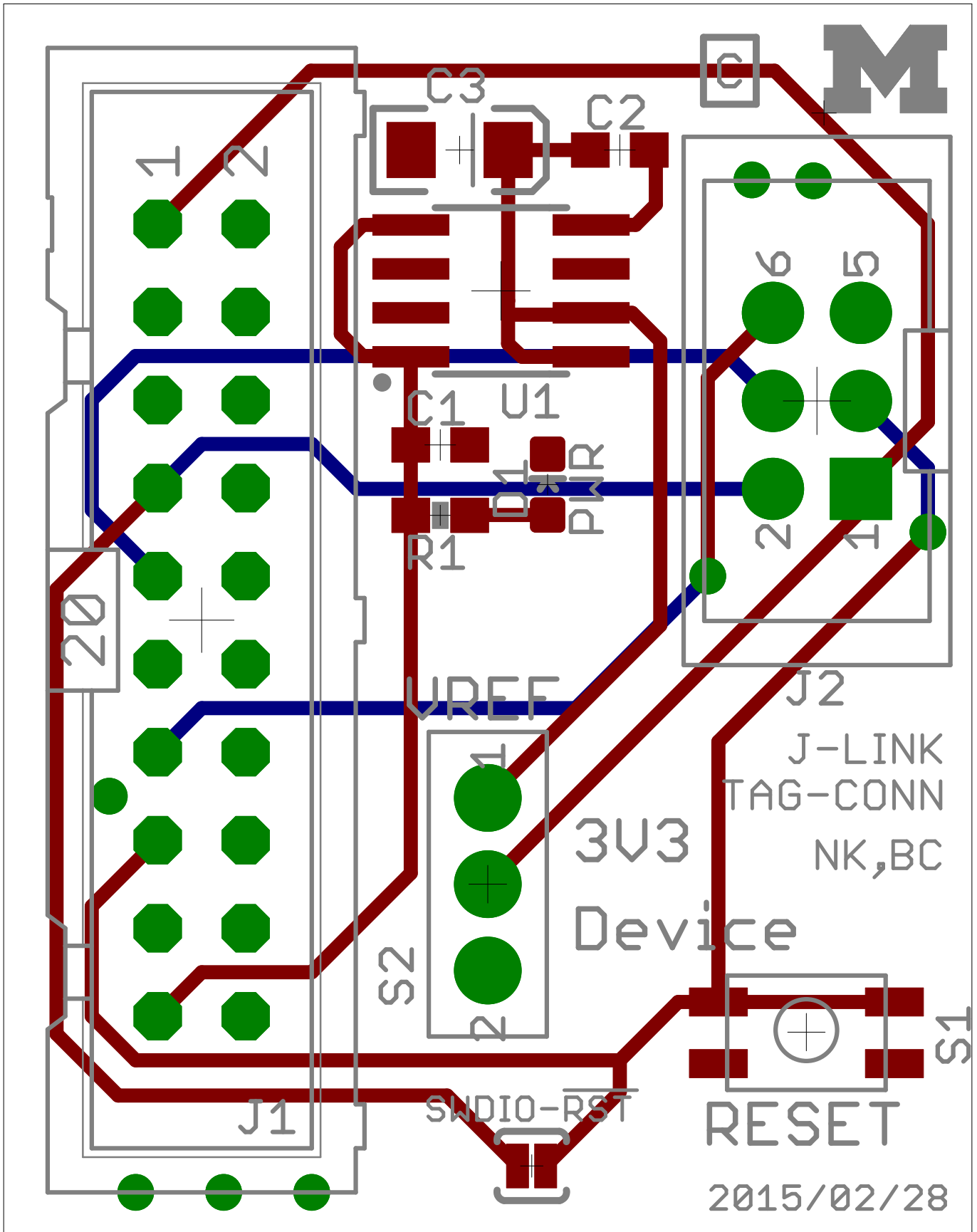
Voltage Ref Select

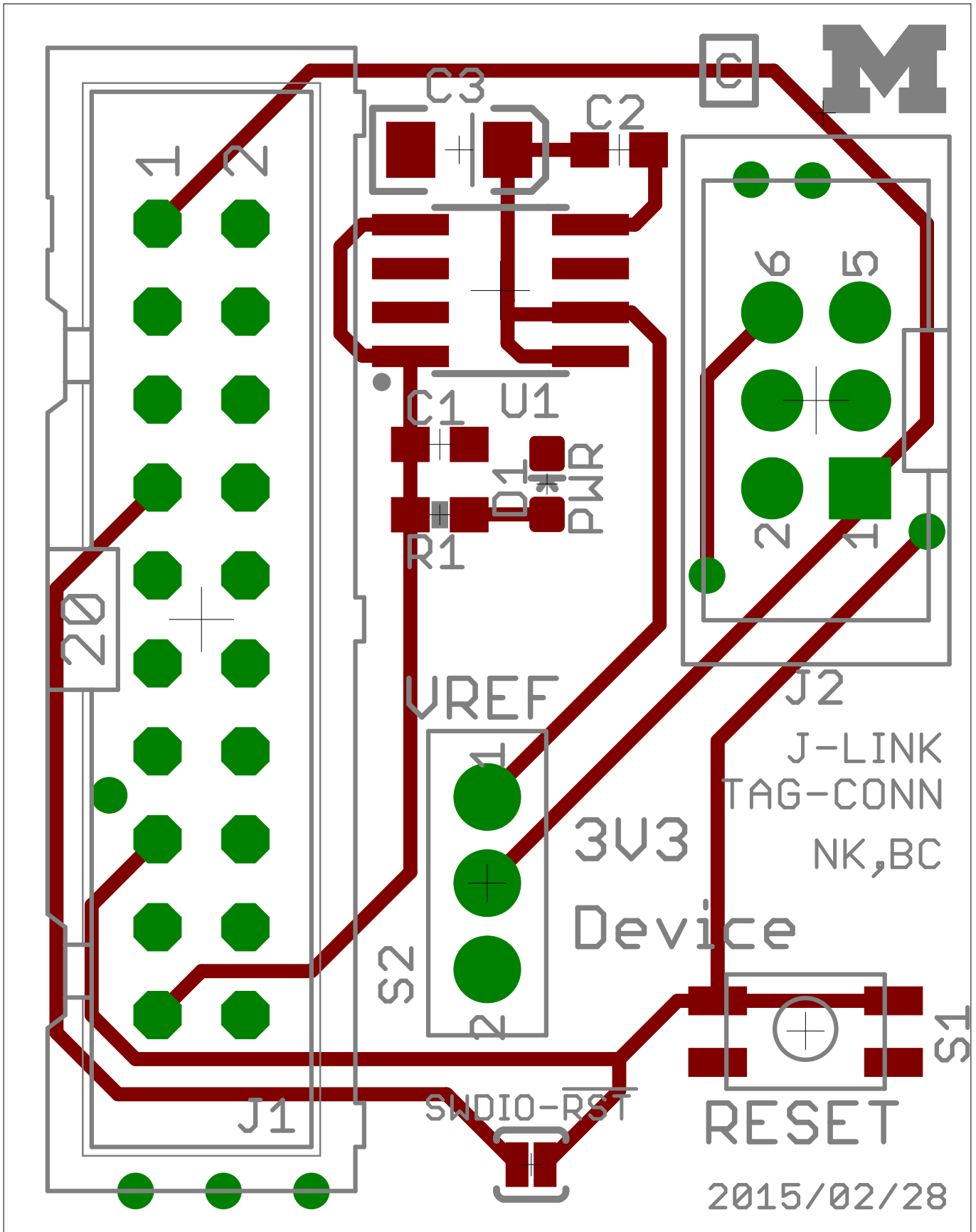


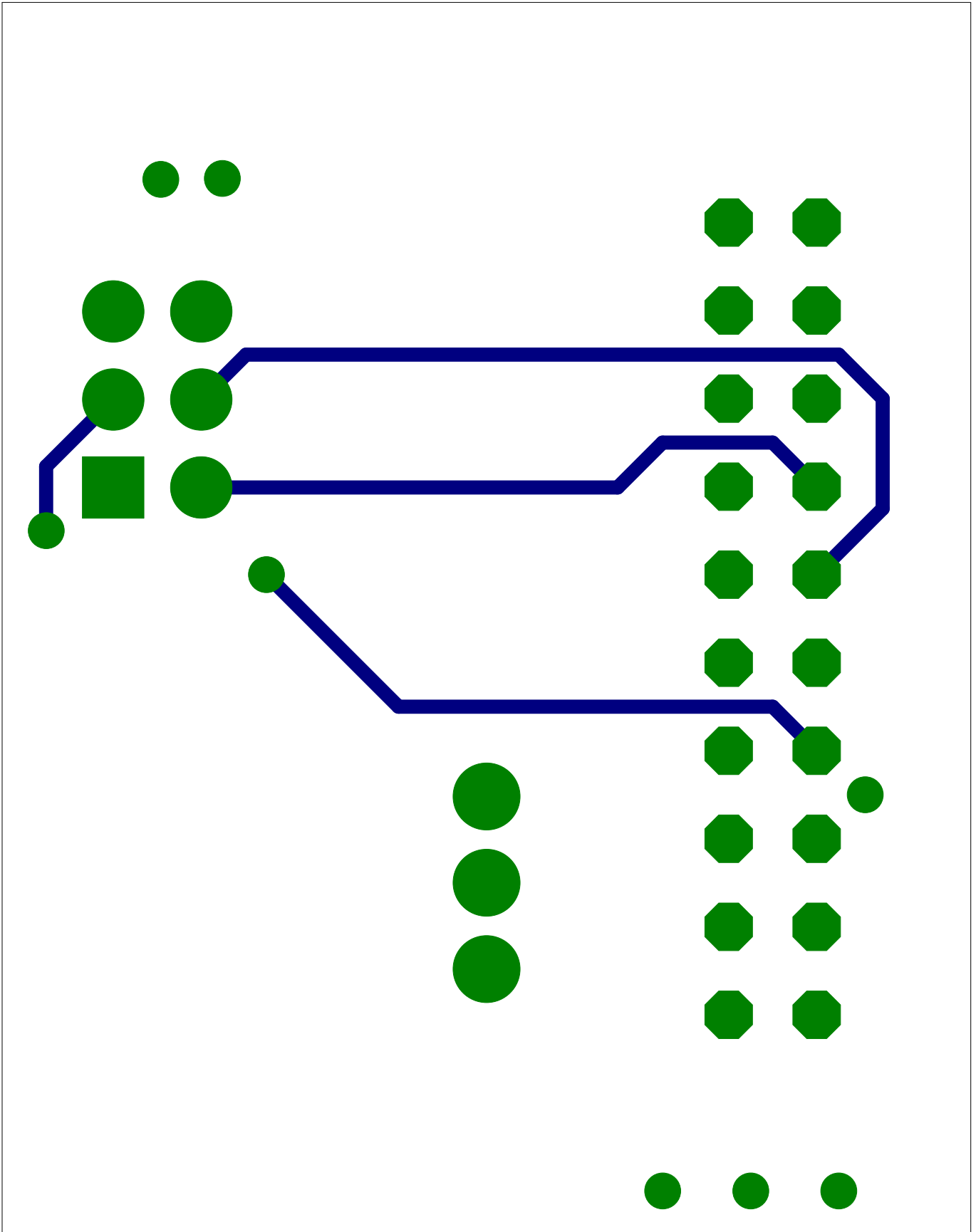
3V3 Regulator



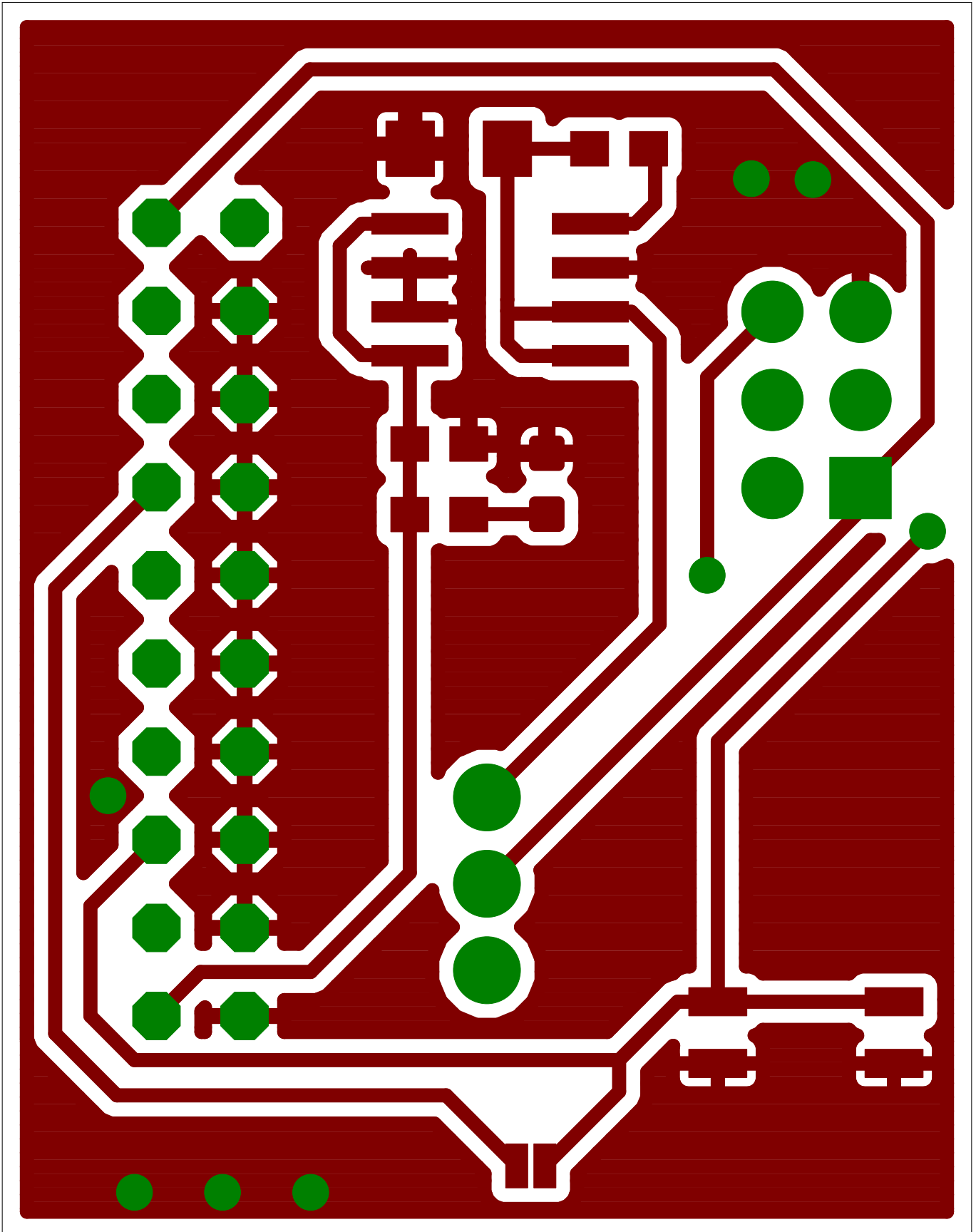
M	JLink to Tag Connect	REV: B
	Author: Noah Klugman / Brad Campbell	
	Date: 2/28/15 3:15 AM	Sheet: 1/1



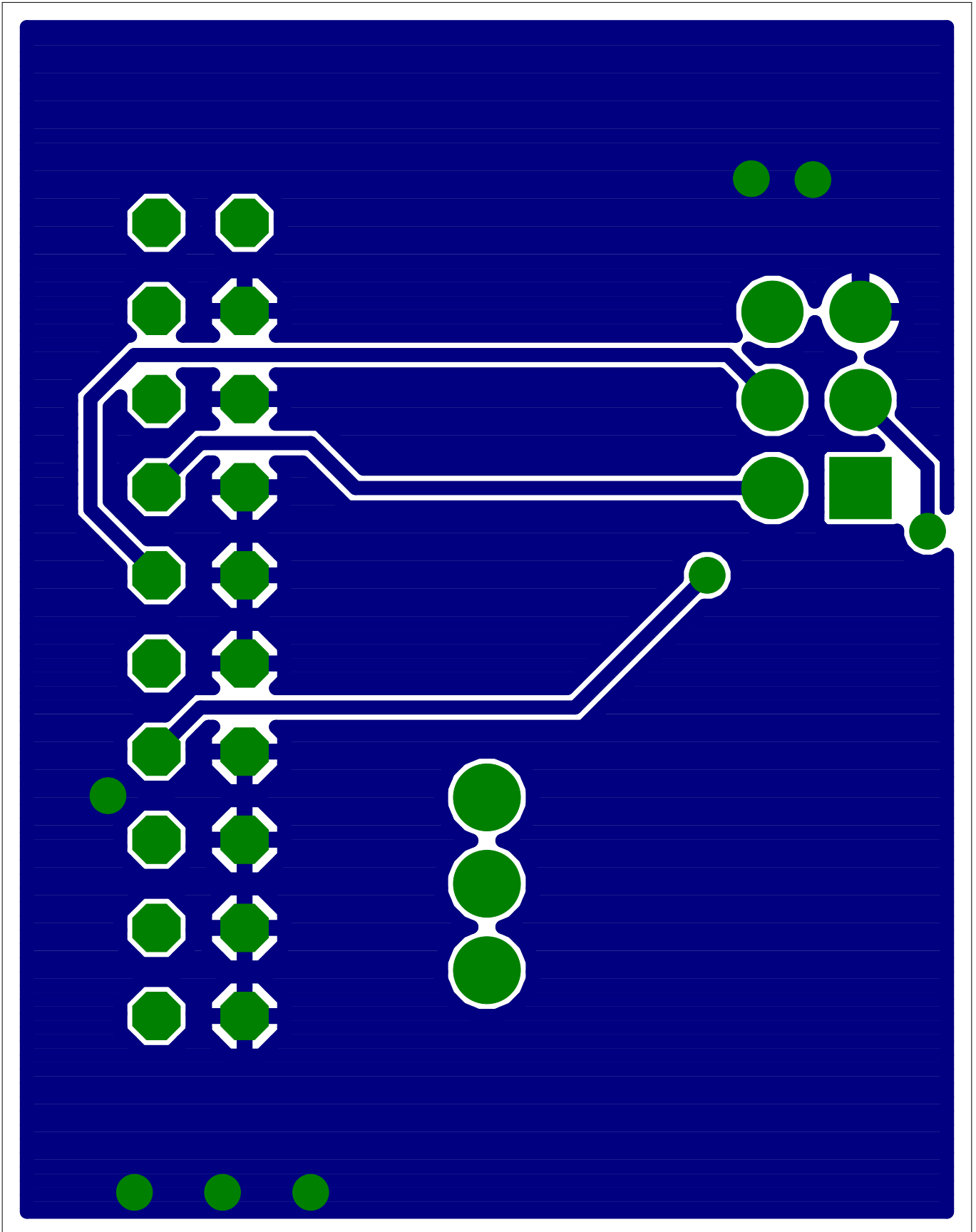


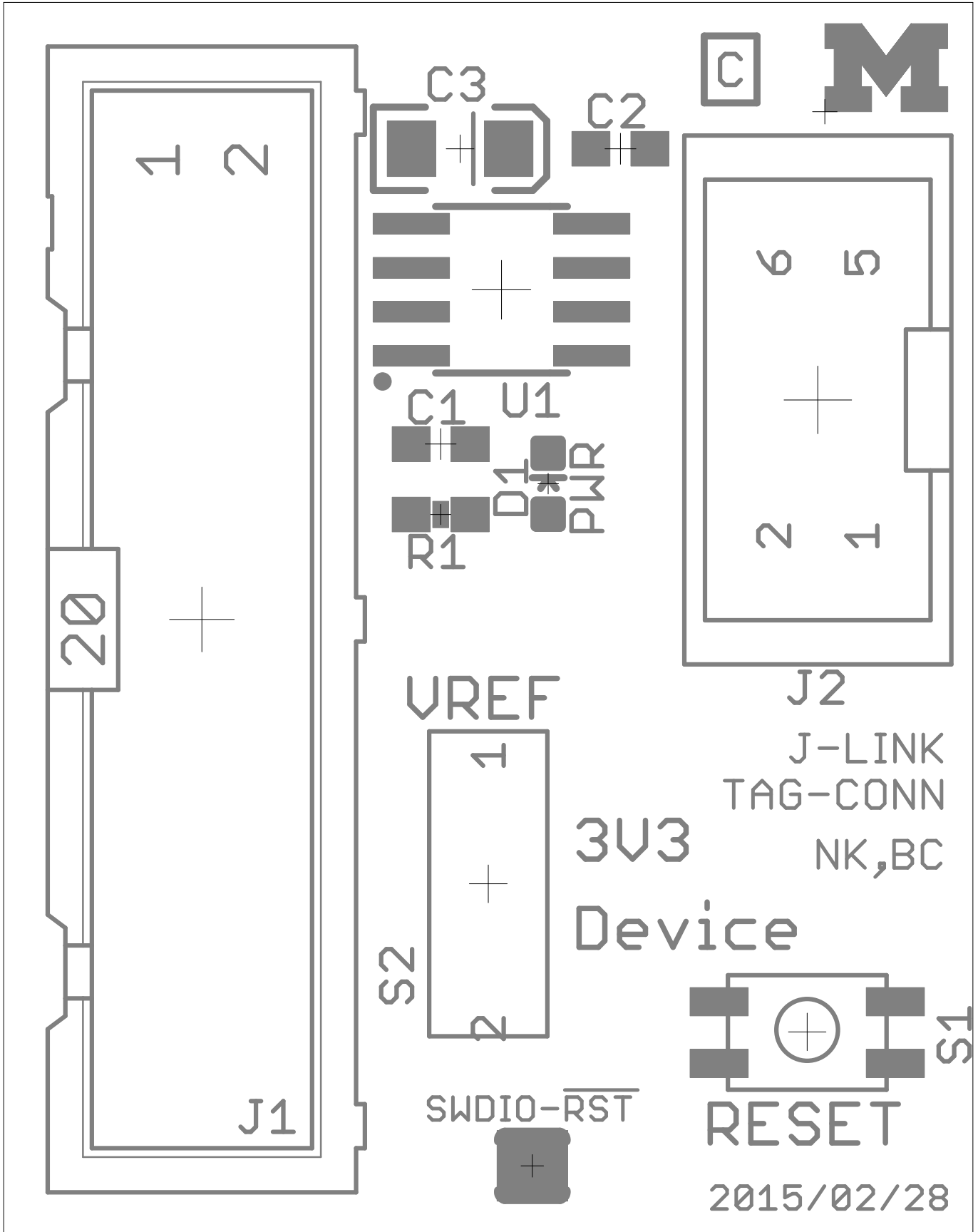


Top Copper Layer

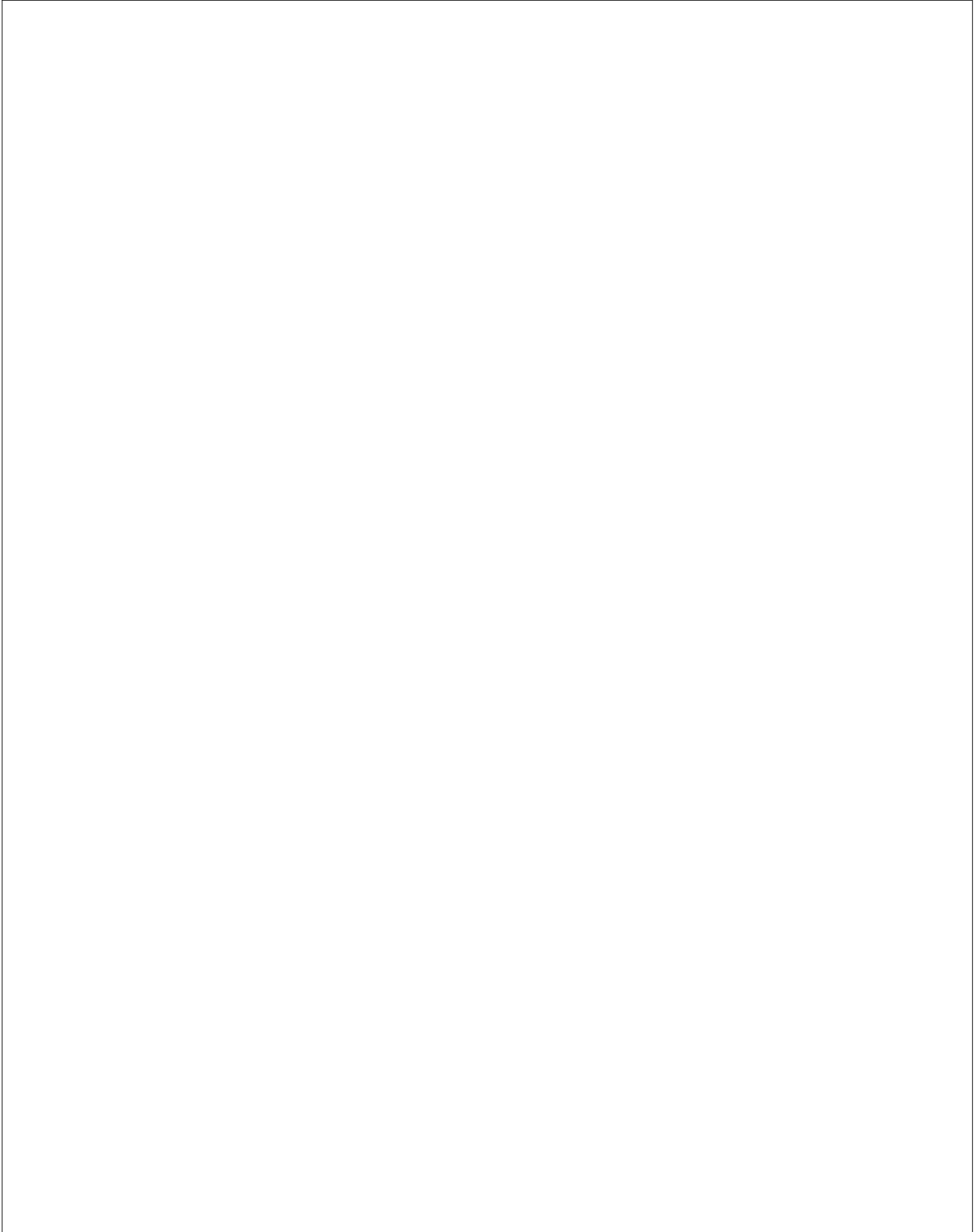


Bottom Copper Layer

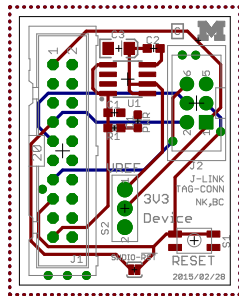


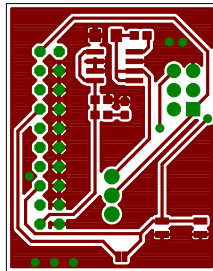


Bottom Paste Layer with Silkscreen

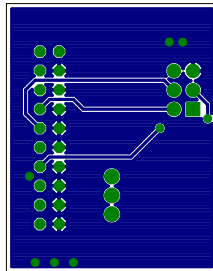


Top and Bottom Layers 1:1 Scale





Bottom Copper Layer 1:1 Scale



Sheet1

Qty	Value	Device	Package	Parts
2	0.01uF	C-EUC0603	C0603	C1, C2
1	10uF	CAP_POL1206	EIA3216	C3
1	BLUE	LED-BLUE0603	LED-0603	D1
1		ML20	ML20	J1
1	JLINK_6PIN_TAG-CON	JLINK_6PIN_TAG-CON	2X3_MALE_SHROUDED_0.10	J2
1	470	RESISTOR0603-RES	0603-RES	R1
1	EVQP2	EVQP2	EVQP2	S1
1	TE_SSA12/SPDT	TE_SSA12/SPDT	TE_SSA12/SPDT	S2
1	LT1763CS8-3.3	LT1763CS8-3.3	SOIC8	U1

Sheet1

Description	DIGIKEY
CAPACITOR, European symbol	490-1512-1-ND
Capacitor Polarized	399-3684-1-ND
Blue LEDs for production use	
HARTING	S9172-ND
This is a 6-pin Tag Connect header with the J-Lin3M15451-ND	
Resistor	
SWITCH TACTILE SPST-NO 0.02A 15V	P11084SCT-ND
SWITCH SLIDE SPDT 2POS SSA SER	450-1602-ND
500mA, Low Noise, LDO Micropower Regulators	LT1763CS8-3.3#TRPBFCT-ND