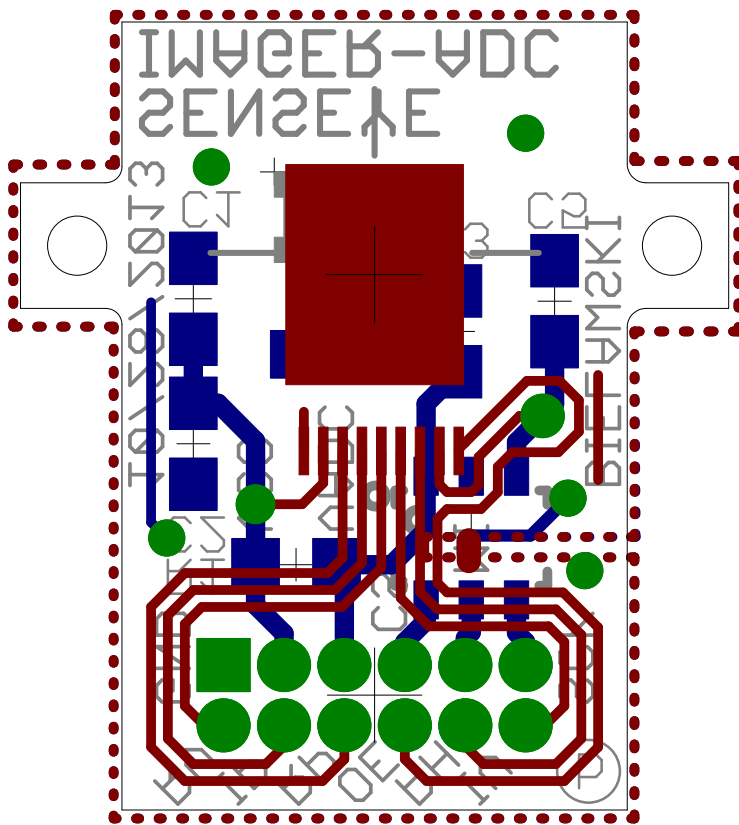
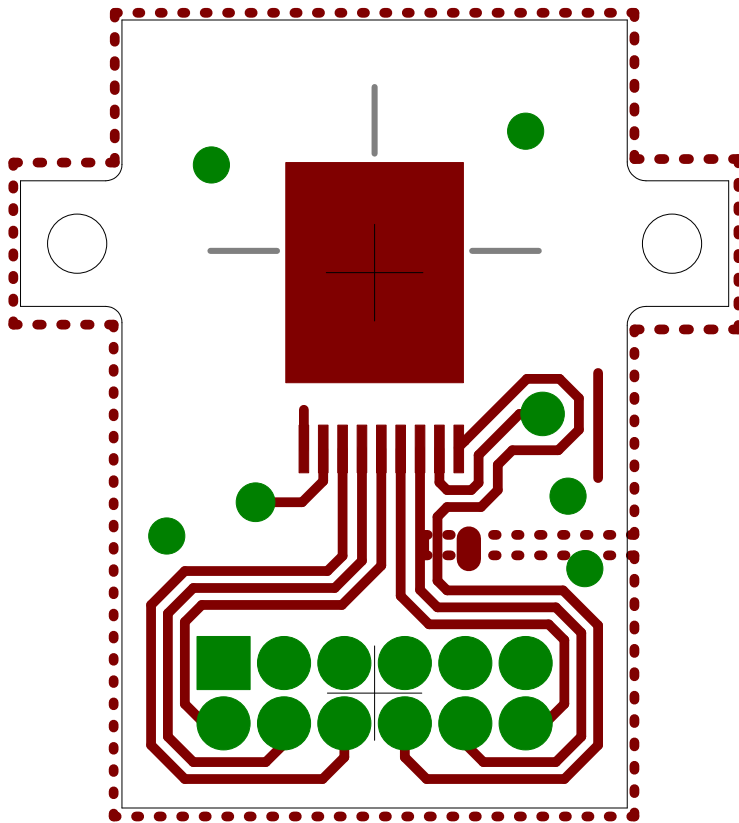
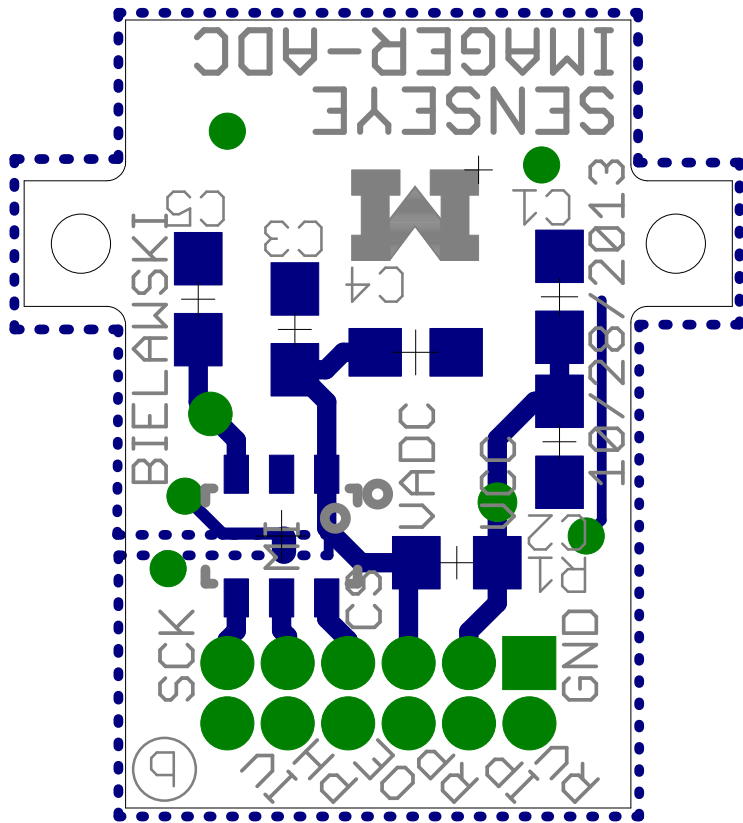


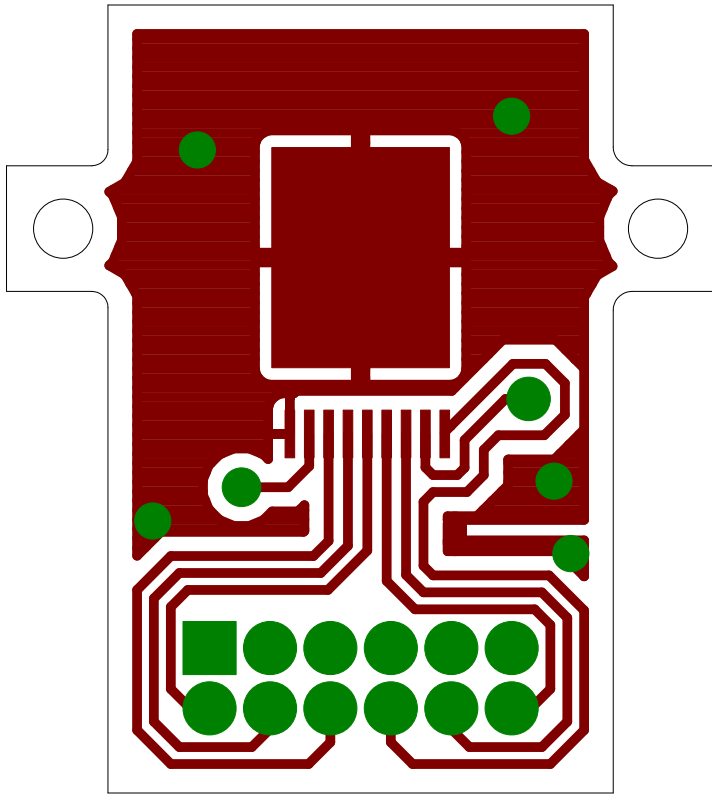
M	SensEye Imager/ADC Board		REV: b
	Author: Russ Bielawski		
	Date: 1/12/14 8:55 PM		Sheet: 1/1



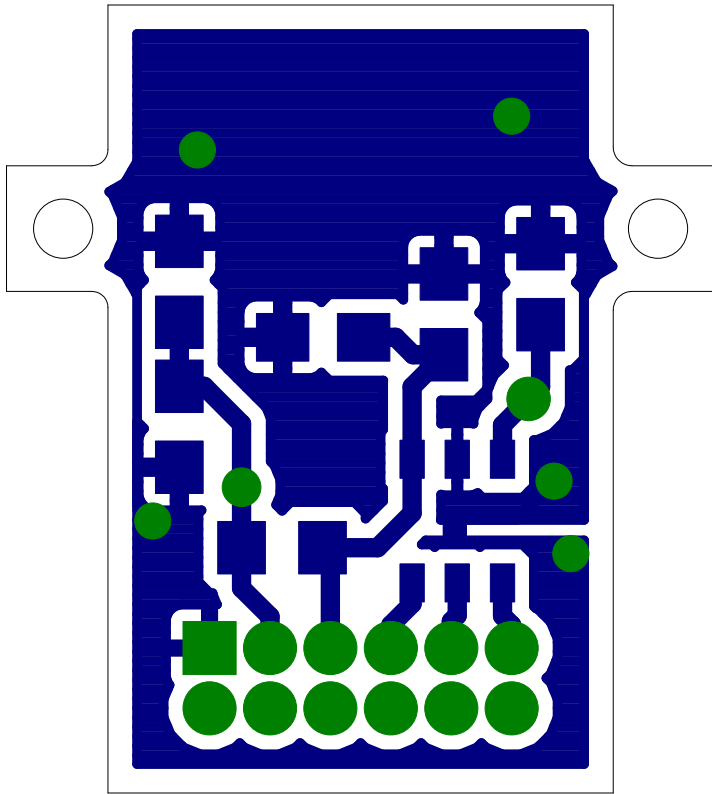




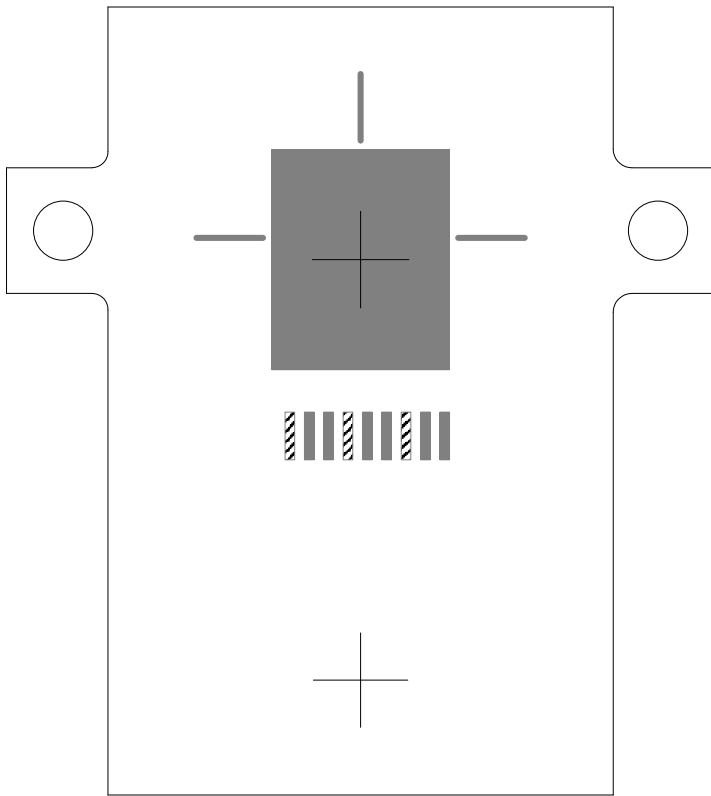
Top Copper Layer

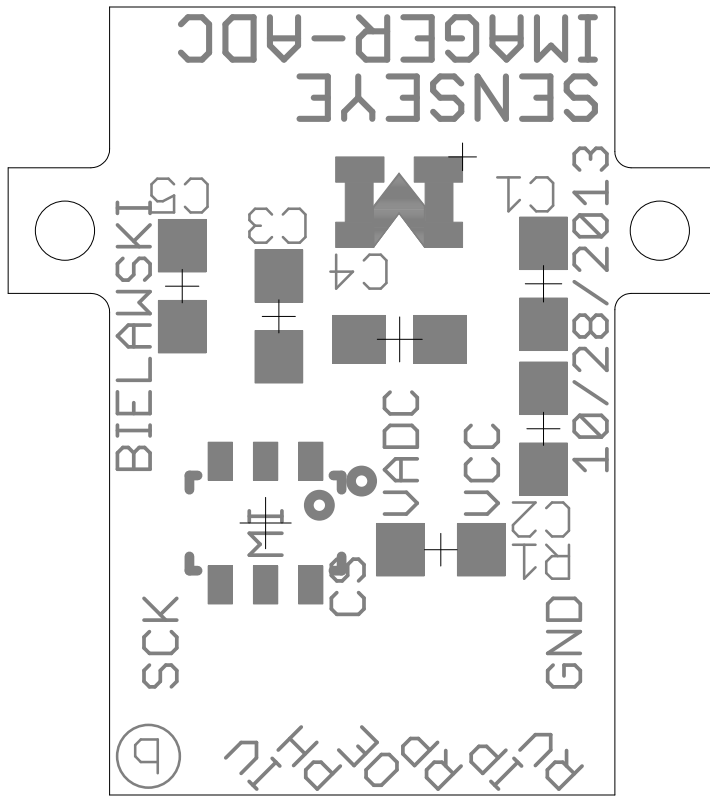


Bottom Copper Layer

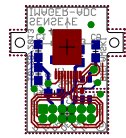


Top Paste Layer with Silkscreen

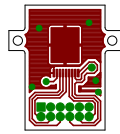




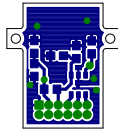
Top and Bottom Layers 1:1 Scale



Top Layer 1:1 Scale



Bottom Copper Layer 1:1 Scale



SensEye Imager-ADC Board

Part	Value	Package	DIGIKEY	Description
C1	1nF	C0603	1276-1916-2-ND	CAPACITOR, European symbol
C2	0.1uF	C0603	1276-1012-2-ND	CAPACITOR, European symbol
C3	0.1uF	C0603	1276-1012-2-ND	CAPACITOR, European symbol
C4	1uF	C0603	1276-1243-2-ND	CAPACITOR, European symbol
C5	OPTIONAL: 10pF-1nF	C0603	1276-1187-6-ND	CAPACITOR, European symbol
J1	HEADER_12PIN2X6_NOSILKHEADER2X6/0.05IN_NO_SILK		S9015E-06-ND	
R1	0 / UNPOP	R0603	1276-3510-6-ND	RESISTOR, American symbol
U1	STONYMANDEFAULT_LENSSTONYMAN_DEFAULT_LENS			Centeye Stonyman imager chip
U2	TI_ADCXX1S101	SOT23-6	ADC121S101CIMF/NOPBDKR-ND	12-bit A/D Converters